

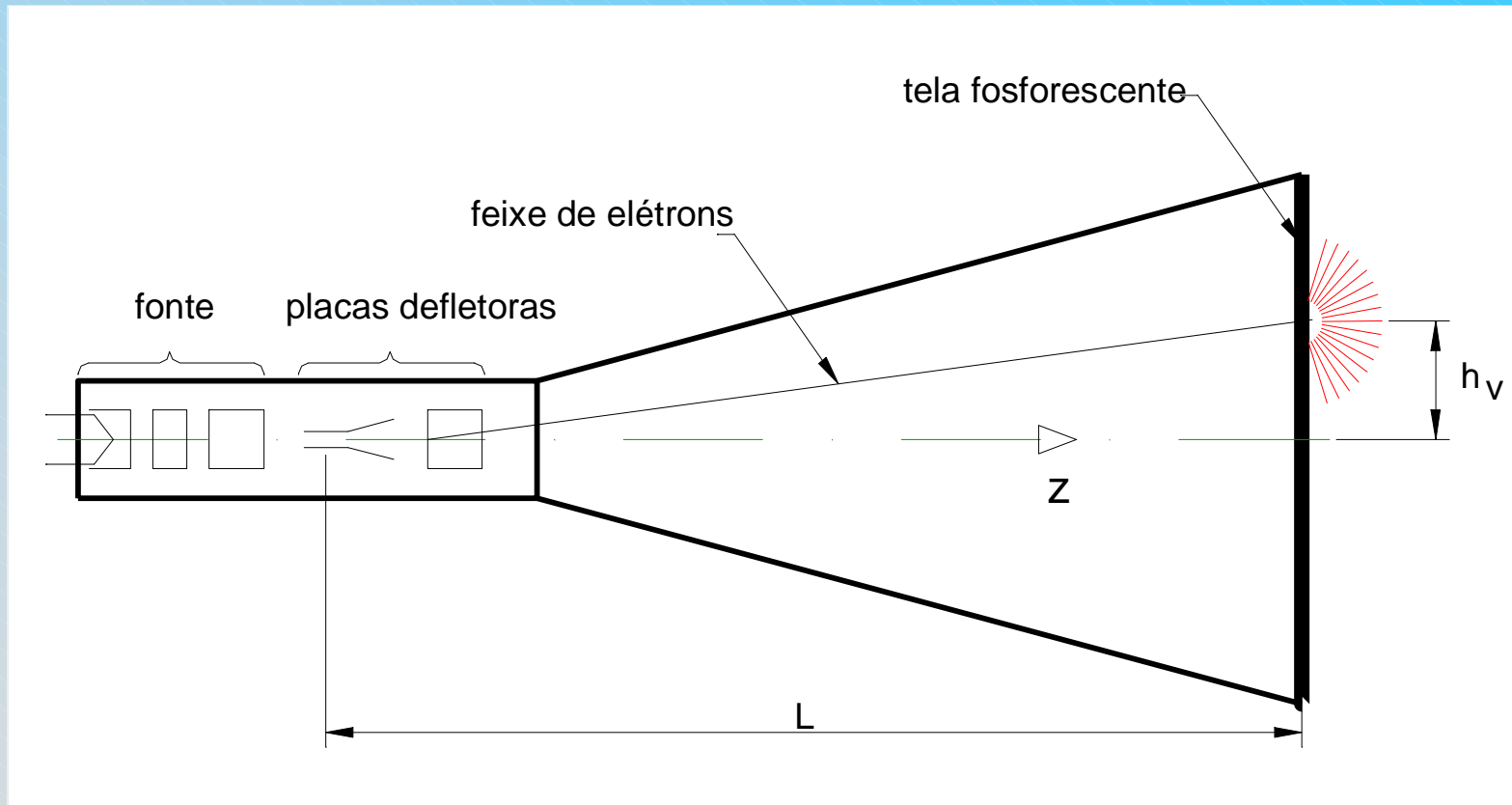
Instituto de Física - USP
FGE0213 - Laboratório de Física III - LabFlex

Aula 6 - (Exp 2.2)
Filtro de Wien

Movimento de elétrons num campo elétrico
o osciloscópio didático

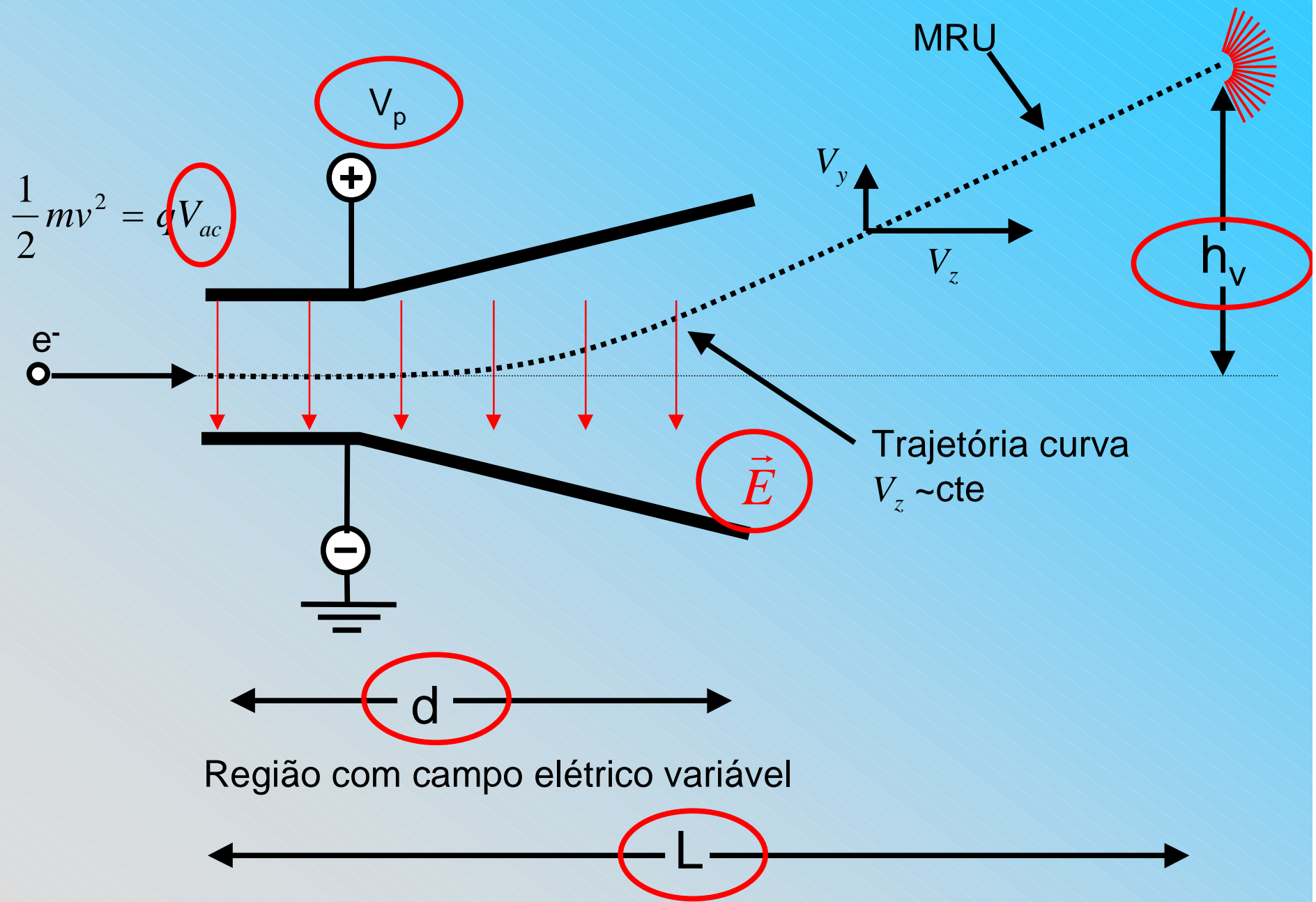
Manfredo H. Tabacniks
Alexandre Suaide
setembro 2007

Esquema do TRC

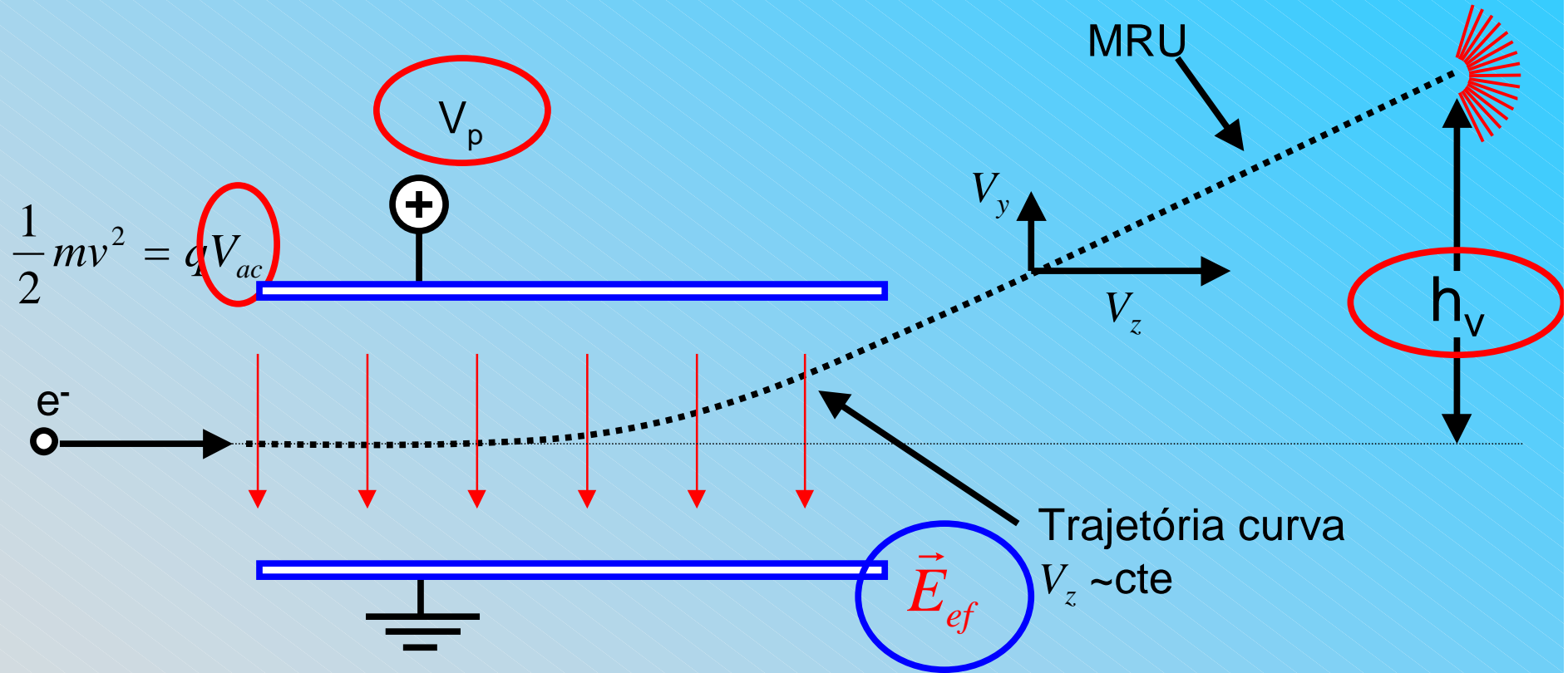


Profa. Eloisa Szanto

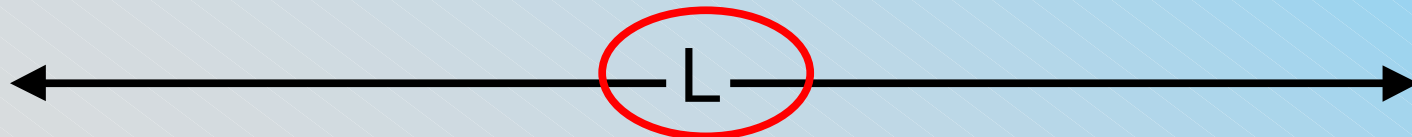
Movimento num TRC



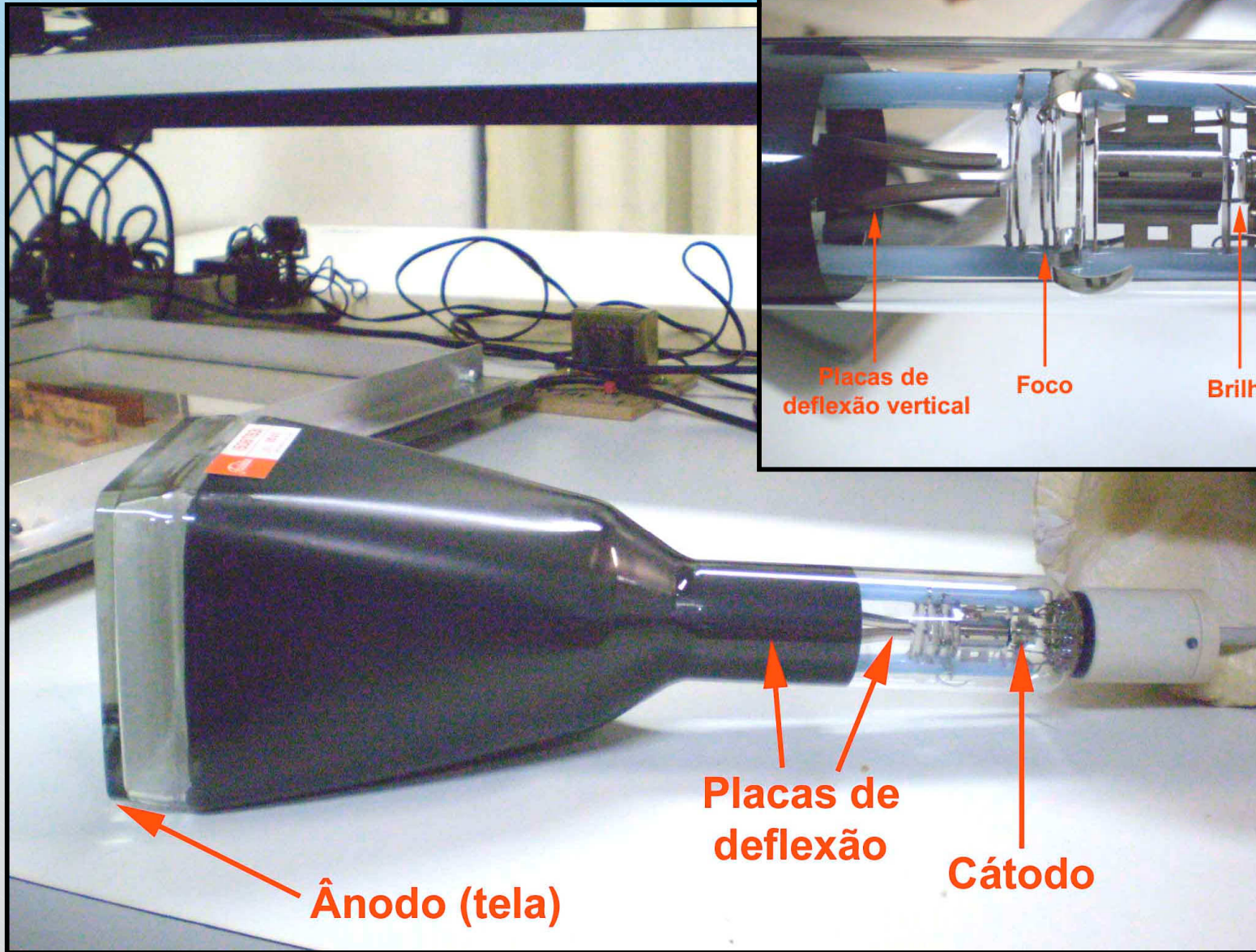
Movimento num TRC



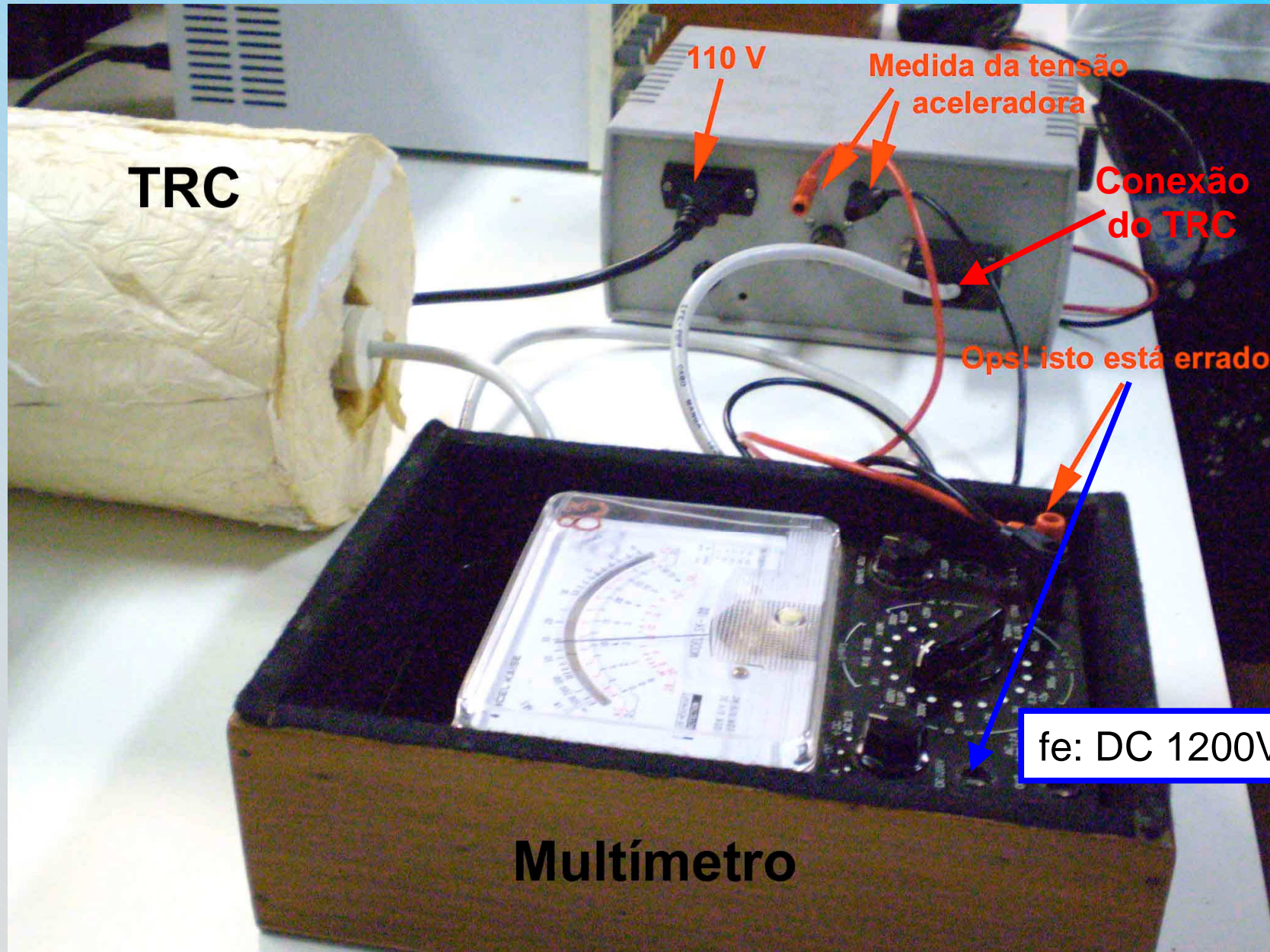
Região com campo elétrico efetivo constante

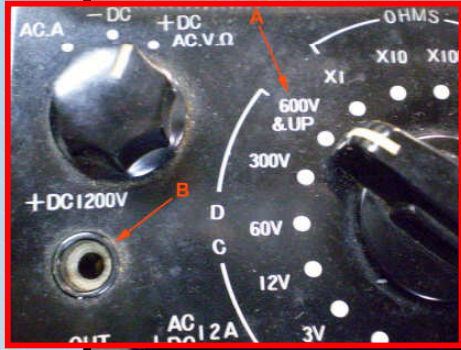


O tubo de raios catódicos



Ligando o TRC



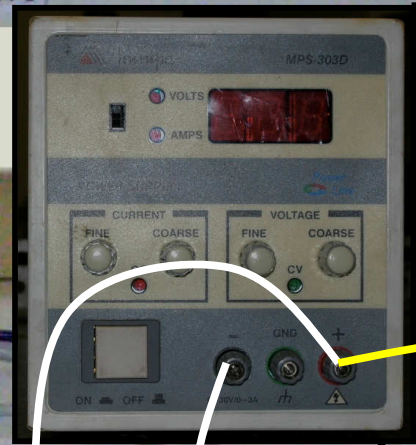


fe: +1200V

Multímetro analógico

fe: fundo de escala

Desconectar a placa +Y



Fonte CC para variar V_p

Polos do Feixe

Terra

Placas de deflexão do TRC

